



EnwaMatic® Maritime for HVAC systems

# Optimized performance and extended lifespan

# EnwaMatic® Maritime Functions

- ◆ Chemical-free, efficient filtration
- ◆ Inhibits corrosion and regulates pH
- ◆ Controls scaling and bacterial growth
- ◆ Regulates water hardness



## Benefits of EnwaMatic® Technology

- |  |  |
|--|--|
| ✓ Eco-friendly, chemical-free technology                               | ✓ Improved heat transfer efficiency          |
| ✓ Automatic, continuous filtration and self-regulating water treatment | ✓ Extended lifespan of all system components |
| ✓ Improved energy efficiency   | ✓ Cost-effective                             |
| ✓ Reduced service and maintenance                                      | ✓ Easy to install                            |

## Safety for You and the Environment



### Clean Systems Without Chemicals

If a closed-loop cooling or heating system is left untreated, it will rapidly deteriorate, leading to operational problems and high maintenance costs. Effective water treatment ensures system efficiency while also maintaining and prolonging the lifespan of the equipment.

EnwaMatic technology is a cost-effective alternative to chemical dosing, with easy installation for side stream flow.

### Eco-Friendly and Safe to Handle

With its non-abrasive, non-toxic, and self-regulating cooling fluid treatment, EnwaMatic technology eliminates the need for chemical additives, protecting both the environment and personnel.

EnwaMatic also significantly reduces the risk of bacterial growth.

### More Than 40 Years of Experience

Enwa develops and delivers energy-efficient and environmentally friendly water treatment systems and is one of Scandinavia's leading companies in this field. Safe drinking water, clean process water, corrosion prevention, and energy efficiency are some of the areas in which our expertise and products add value for our customers.

# Technical Information

## Crafted for Excellence

Designed and assembled in Sweden, the EnwaMatic standard units are built with the user in mind. With over 30 years of proven performance, this robust and reliable unit has been continuously developed to meet the latest and highest standards.

Engineered for ease of installation, maintenance, and integration, EnwaMatic features high-quality components.

Choose EnwaMatic – where durability, user-friendliness, and quality meet.

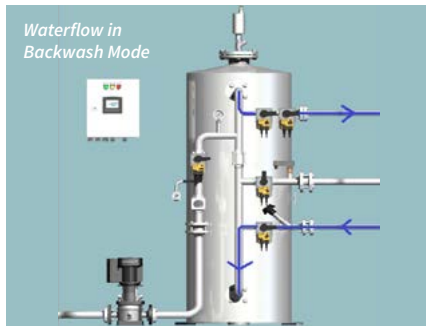
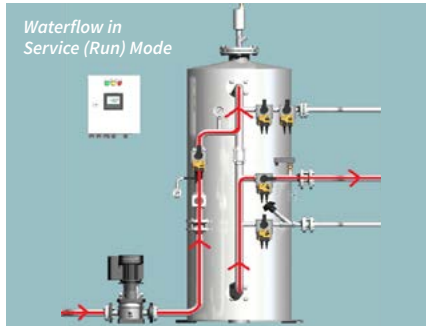
## Easy to Install – Easy to Operate

EnwaMatic is delivered fully assembled as a plug-and-play unit, ensuring easy installation and operation. It is compatible with all closed-loop systems that utilize water as the energy carrier.

EnwaMatic is installed as a sidestream filter, ensuring efficient and chemical-free operation, allowing you to enhance your system with minimal effort.

## Software and Features

- Automated backwashing
- Interface/HMI: 4.3" color touchscreen
- Language selection – Swedish, Norwegian, English, or German
- Service reminder
- Wall-mounted control panel measurements: H: 400 mm, W: 300 mm, D: 210 mm
- Power connection: 230V, 10A



## Options

To further optimize operation and adapt EnwaMatic to the system, a range of optional features is available:

- Flow monitoring – digital or analog
- Communication with supervisory system – Modbus TCP/IP, Modbus RS-485, or via potential-free relay
- External start/stop
- Alarm transmission from circulation pump
- Version BAF – for systems with glycol



## TECHNICAL INFORMATION

	EMM 40	EMM 75	EMM 150	EMM 200	EMM 300
<b>Total system volume</b> (m <sup>3</sup> )	<40	<75	<150	<200	<300
<b>System pressure</b> (bar)	0-16	0-16	0-16	0-16	0-16
<b>System temperature</b> (°C)	0-109	0-109	0-109	0-109	0-109
<b>Diameter</b> (mm)	500	600	600	700	800
<b>Height</b> (mm)	2280	2230	2480	2600	2780
<b>Weight full</b> (kg)	370	505	650	890	1225



## TECHNICAL INFORMATION

	EMM/EME F1	EMM/EME F2	EMM/EME F3
<b>Total system volume</b> (m <sup>3</sup> )	<7	<20	<40
<b>System pressure</b> (bar)	0-10	0-10	0-10
<b>System temperature</b> (°C)	0-109	0-109	0-109
<b>Diameter</b> (mm)	550	600	600
<b>Height</b> (mm)	1500	1700	2000
<b>Weight full</b> (kg)	90	200	240

# Proven in Action

## Boost Your Systems

– Eco-friendly!

Are you ready for the eco-friendly switch away from chemicals to support a safer and healthier environment?

Designed for closed-loop heating and cooling systems struggling with corrosion and blockages, EnwaMatic helps stabilize water chemistry by regulating pH, alkalinity, and hardness. This inhibits corrosion, leading to more efficient cooling and heating, which reduces energy consumption and extends the lifespan of the system.

Choose EnwaMatic for **reliability, efficiency,** and **sustainability!**


EnwaMatic is suitable for, and has been successfully installed in, a number of different types of boats, platforms and systems, such as:

- Cruise Ships
- Offshore platforms
- Yachts
- Tankers
- Ferrys



## Tui / RCCL Cruise Ships

Equipped most of its fleet with EnwaMatic systems over the past decade. The solution provides sustainable, chemical-free water treatment for HVAC systems, improving operational stability and crew safety. By removing the need for chemical handling, it also supports the cruise line's environmental and sustainability goals.



**EnwaMatic® Reaction Media**  
– The Key to Success

What sets EnwaMatic apart is its filter media. The EnwaMatic Reaction Media is a proven, chemical-free blend of components that is environmentally friendly and safe for users. With over 30 years of testing and continuous improvement, EnwaMatic, together with its unique filter media, delivers perfect results, making it the trusted choice for your systems.

*Water samples from the EnwaMatic technology:  
Day 1 to day 30.*



## Hurtigruten

Hurtigruten ASA has safeguarded its HVAC systems for nearly two decades using EnwaMatic Maritime technology. The solution ensures stable, chemical-free water treatment across the fleet, protecting against corrosion, scaling, and fouling while supporting sustainable operations.

Enwa is part of the EnviroWater Group,  
a network of companies with experts in  
sustainable water preparation and treatment.

Member of EnviroWater Group 

EnwaMarfc\_Maritime\_Brochure\_EN\_v251111



[enwa.com](http://enwa.com)

### Enwa Water Technology AB

Importgatan 21  
422 46 Hisings Backa  
SWEDEN

+46 (0)31 742 9250  
[info@enwa.com](mailto:info@enwa.com)

### Enwa Water Technology AS

Kyrkjehølsvegen 3  
5583 Vikedal  
NORWAY

+47 (0)93 09 24 26  
[service@enwa.com](mailto:service@enwa.com)



CONTACT US

ADVANCED WATER TECHNOLOGY  
**enwa**